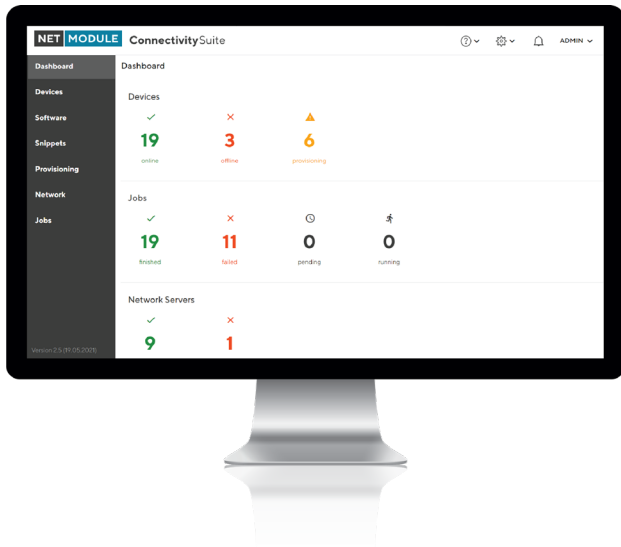


Connectivity Suite

For managing and securing your network infrastructure

31.08.2022, ©NetModule AG
Product Information Connectivity Suite
Errors reserved



Key Features

- Automatic setup of a VPN infrastructure
- Over-the-air remote updates and configurations
- Remote access to connected devices
- On-premise installation
- REST API for M2M communication

Product Description

The lean remote management system to build your private network infrastructure and maintain NetModule devices.

Secure your network

The Connectivity Suite allows the user to logically group devices based on networks. The grouping of devices here enables hierarchical access control. This allows devices to be grouped by customers, regions, teams, etc., and for users such as service technicians, access rights can be restricted to specific groups.

The Connectivity Suite also enables the automated set-up of a VPN infrastructure for end-to-end encryption without the need for user interaction. This means that even IT network managers without OpenVPN knowledge can set up and operate secure communication network with just a few clicks.

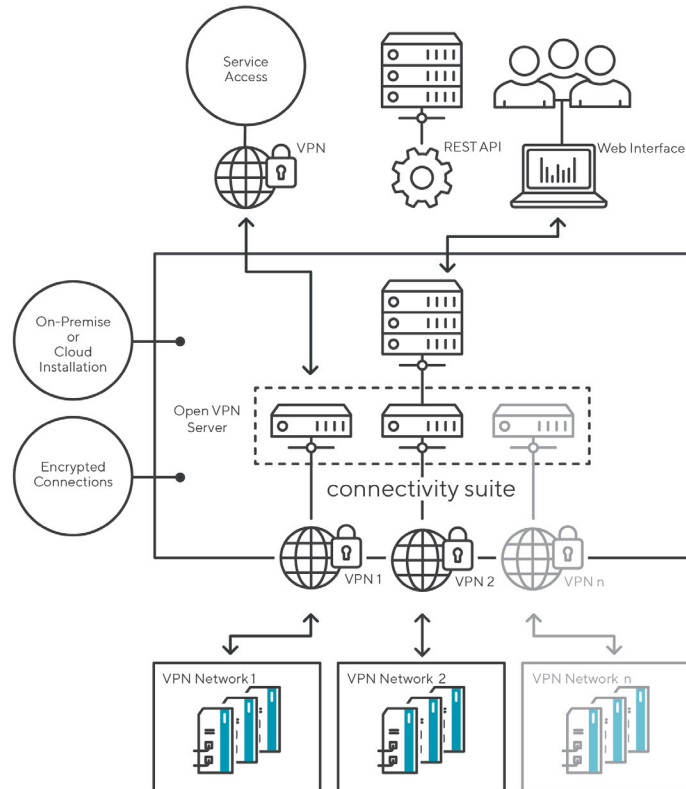
The Connectivity Suite can be installed and operated on-site on your own servers (on-premise). This allows you to retain control of the data and ensure IT compliance. However, installation in a cloud environment is also possible.

Reduce the management effort of your network

Automated and scheduled over-the-air updates and configurations for device fleets are possible with a minimum of effort. This ensures a scalable network and efficient device management.

In support or maintenance cases, direct remote access to the installed devices is possible. With a few clicks, the service technician can connect to the connected devices. The remote maintenance situation is for the service technician as if he were on site.

Using the REST API, the functionality of the Connectivity Suite can be accessed via M2M communication interface to integrate it into your IoT platform.



Features

Security features

- Hierarchical access control to different groups based on user role
- Logical separation of devices based on subnetworks
- On-premise installation
- Automated end-to-end encryption based on OpenVPN
- Separation of VPN connections

Management features

- Assign units to subnetworks
- Remotely add, disconnect or manage units
- Firmware Over-The-Air
- Configuration Over-The-Air
- Scheduling updates
- Edit and export configurations
- Historicising configuration changes
- Replacing devices in the network
- Remote access to devices behind the connected router

Minimum system requirements

- Server: Physical or virtual server, either hosted by the company or by an IAAS (Infrastructure as a Service) provider
- Operating system: Ubuntu 20.04 / 22.04, Debian 10
- CPU: 2 cores each running at 2.5 GHz
- RAM: 16 GB
- Disk space: 120 GB

Interfaces

- HMI communication interface based on a https web interface
- M2M communication interface based on a REST API

Supported devices

- NB8xx
- NG8xx
- NB1xxx
- NB2xxx
- NB3xxx
- ES3300



Order information

Connectivity Suite with VPN, annual license for ≤ 20 devices

Order number: CS_20_Lic

Connectivity Suite with VPN, annual license for ≤ 50 devices

Order number: CS_50_Lic

Connectivity Suite with VPN, annual license for ≤ 100 devices

Order number: CS_100_Lic

Connectivity Suite with VPN, annual license for ≤ 200 devices

Order number: CS_200_Lic

Connectivity Suite with VPN, annual license for ≤ 300 devices

Order number: CS_300_Lic

Connectivity Suite with VPN, annual license for ≤ 400 devices

Order number: CS_400_Lic

Connectivity Suite with VPN, annual license for ≤ 500 devices

Order number: CS_500_Lic

Connectivity Suite with VPN, annual license for ≤ 600 devices

Order number: CS_600_Lic

Connectivity Suite with VPN, annual license for ≤ 700 devices

Order number: CS_700_Lic

Connectivity Suite with VPN, annual license for ≤ 800 devices

Order number: CS_800_Lic

Connectivity Suite with VPN, annual license for ≤ 900 devices

Order number: CS_900_Lic

Connectivity Suite with VPN, annual license for ≤ 1000 devices

Order number: CS_1000_Lic